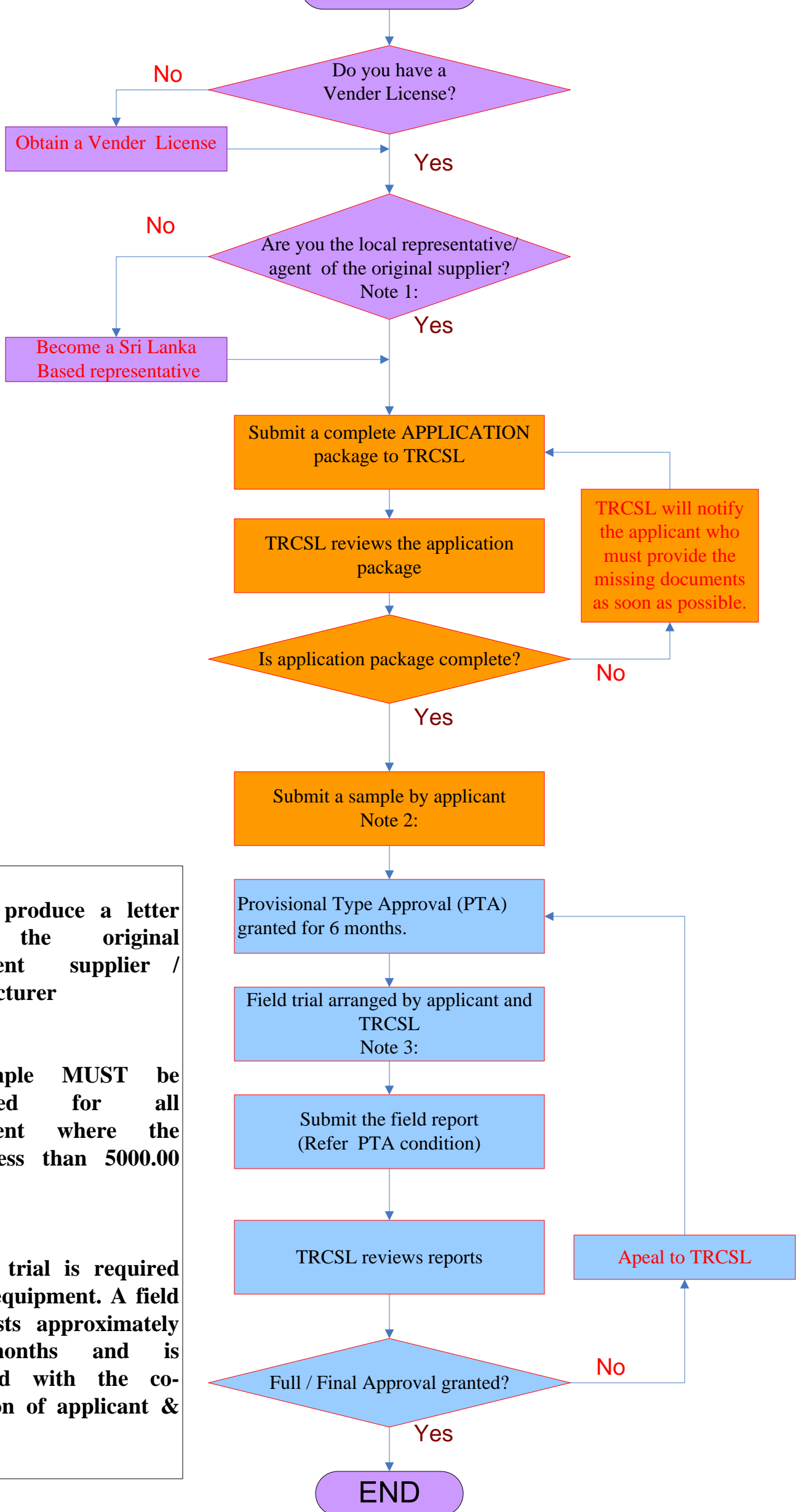


Route To Type Approval

TRCSL

START



Note 1:
Should produce a letter form the original equipment supplier / manufacturer

Note 2:
A sample MUST be submitted for all equipment where the value less than 5000.00 US\$

Note 3:
A field trial is required for all equipment. A field trial lasts approximately 3-6 months and is arranged with the co-operation of applicant & TRCSL